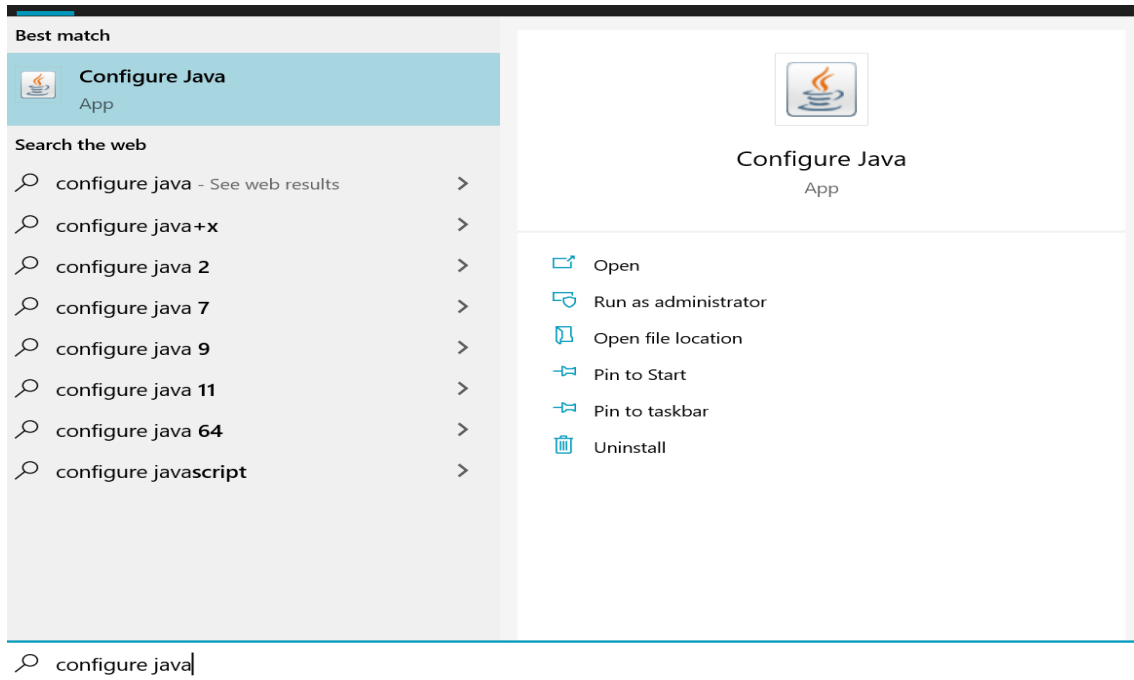


How to Configure Java, download new jnlp and upload e-manifest in ASYCUDA World

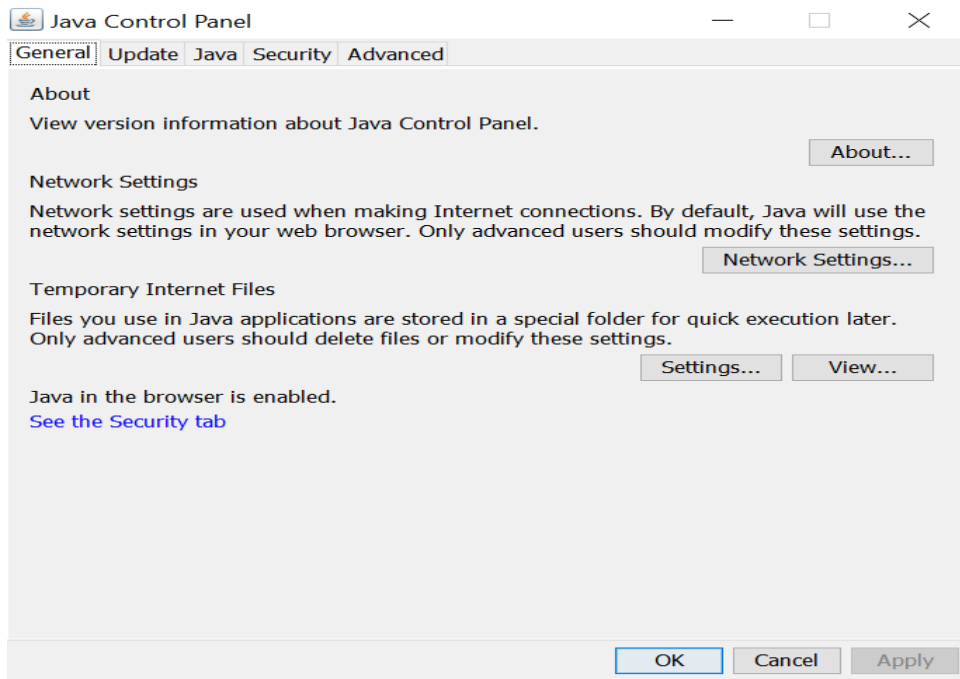
[Pls clear you java cache by following documents “How to Clear Java Cache” from <https://customs.gov.bd>]

1. Search Configure java as shown below:

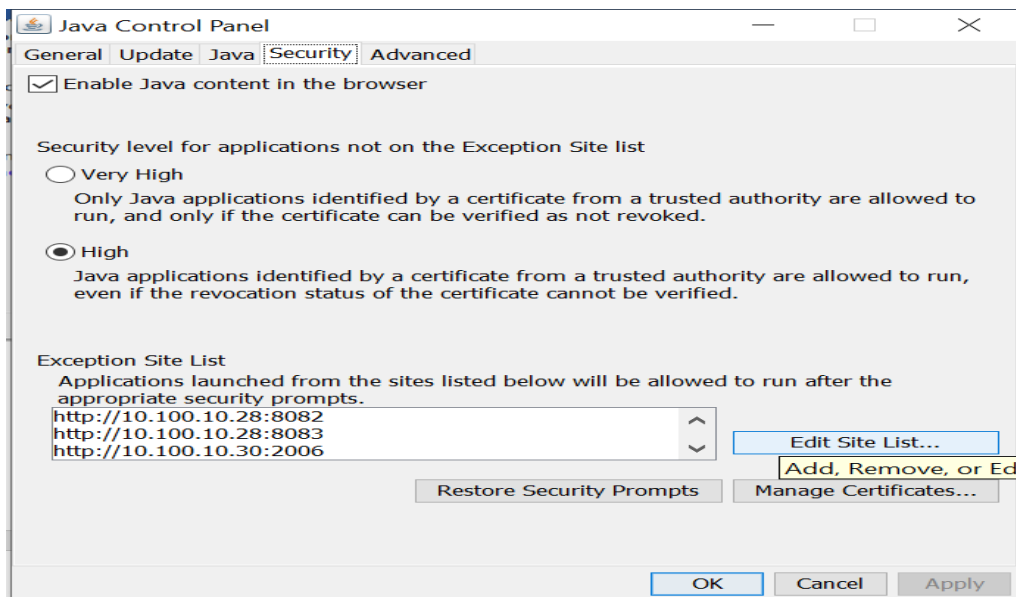


2. Click on Configure Java from the Right side

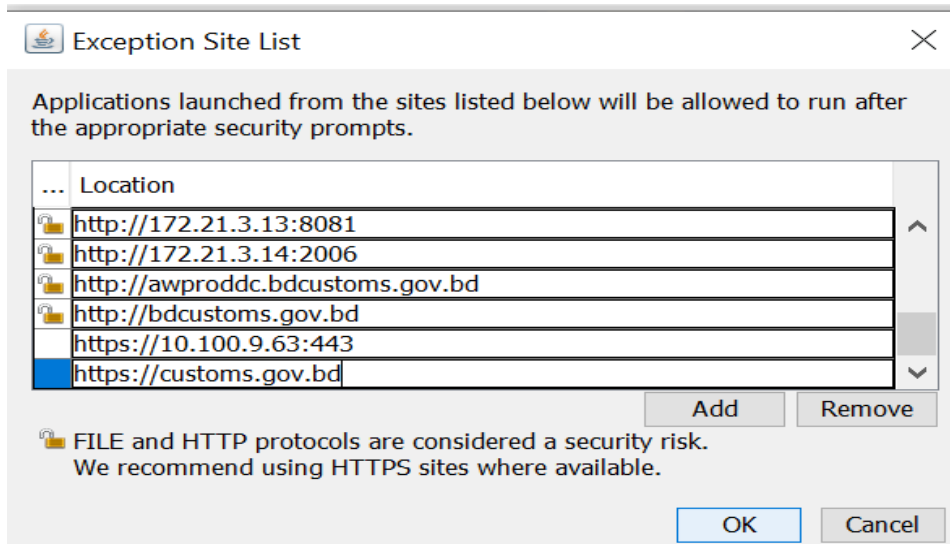
3. You will get java control panel, Click on Security



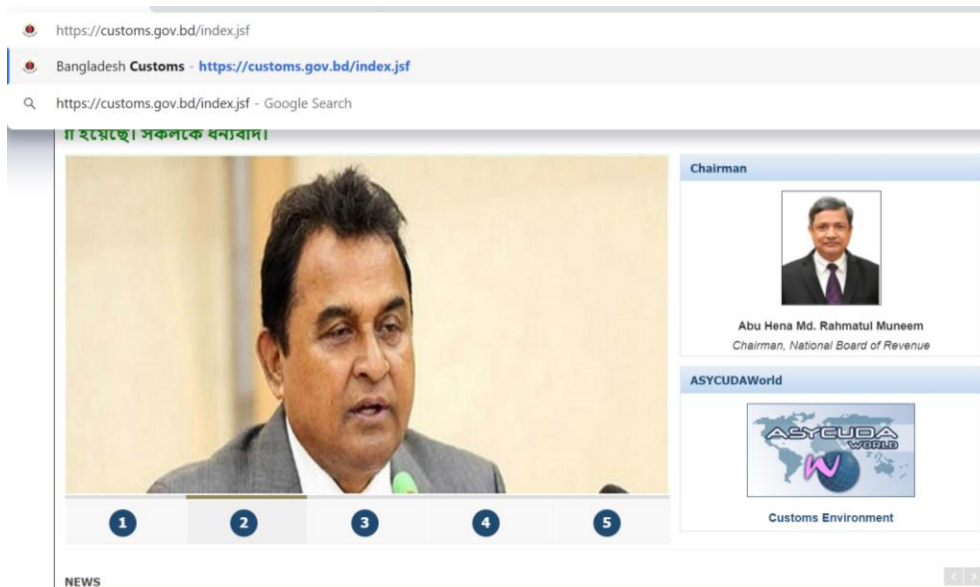
5. Select High , then click on Edit Site List



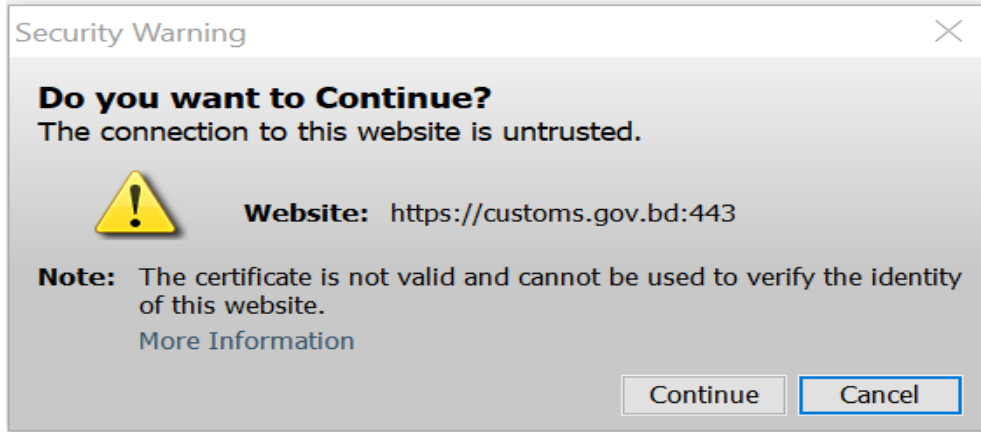
6. Click on Add, scroll down, type <https://customs.gov.bd> as shown below:



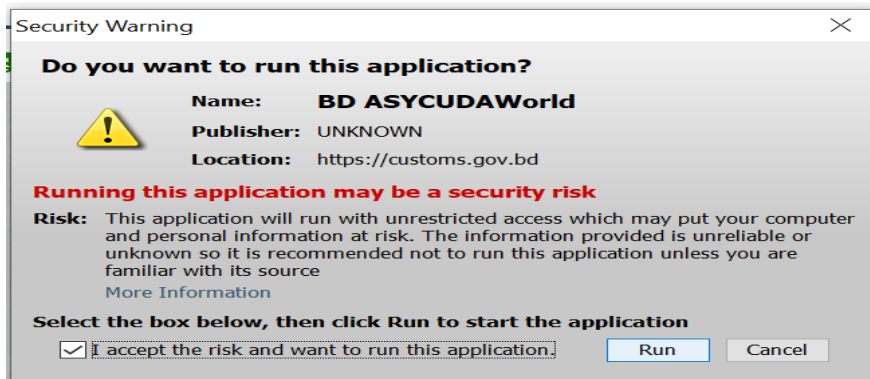
7. Click OK, OK
8. Go to your browser (firefox):
9. Type <https://customs.gov.bd>



10. Click on Customs Environment icon. You will see the below alter:



11. Click on Continue. You will receive another warning.



12. Tick on "I Accept", then click on Run

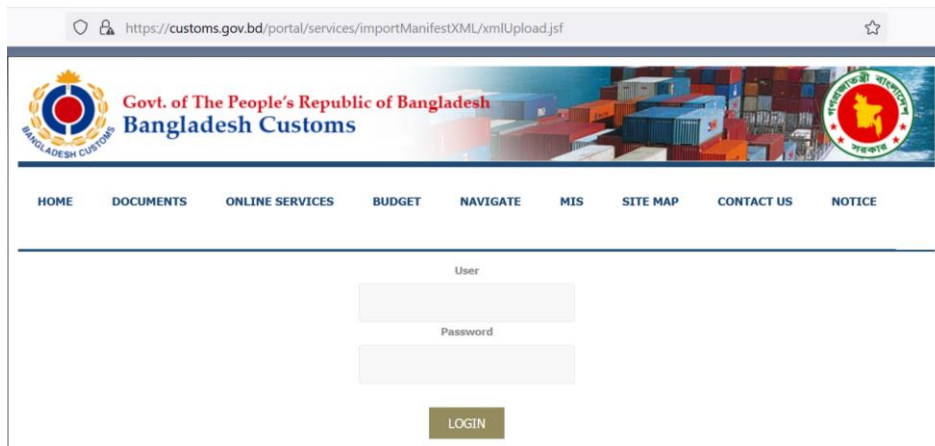
13. Necessary Files will be download, then you will get login screen



Uploading e-manifest:

1. Type <https://customs.gov.bd> in your browser
2. Select Online Services
3. Select Upload e-manifest
4. You will find login prompt, provide your userid, password
5. Click on LOGIN or you can directly type

<https://customs.gov.bd/portal/services/importManifestXML/xmlUpload.jsf>



The screenshot shows a web browser window with the URL <https://customs.gov.bd/portal/services/importManifestXML/xmlUpload.jsf>. The page header features the Bangladesh Customs logo and the text "Govt. of The People's Republic of Bangladesh Bangladesh Customs". Below the header is a navigation menu with links: HOME, DOCUMENTS, ONLINE SERVICES, BUDGET, NAVIGATE, MIS, SITE MAP, CONTACT US, and NOTICE. The main content area contains a login form with two input fields labeled "User" and "Password", and a "LOGIN" button below them.

You will be able to upload your xml files.